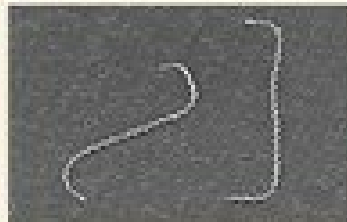


LEPTOSPIROSIS

Leptospirosis is a bacterial disease that affects humans and animals. Leptospirosis is caused by bacteria of the genus *Leptospira*



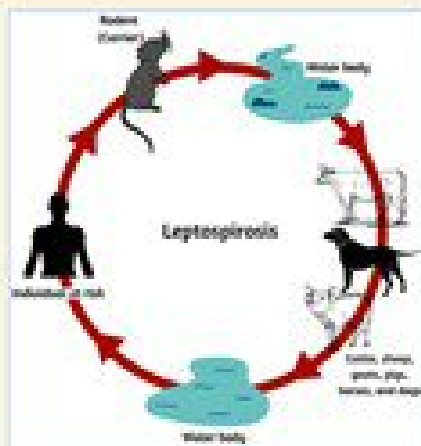
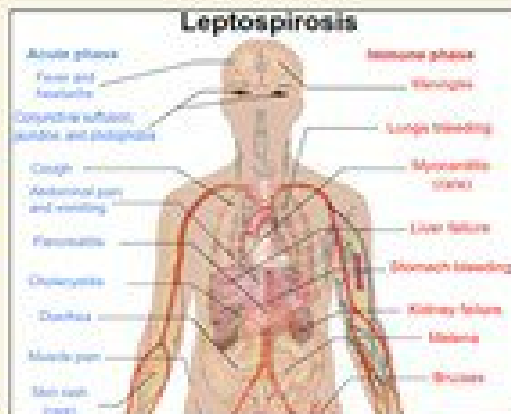
Dark Field Microscopy



Electron Microscopy



Leptospira can infect all kinds of wild and domestic animals



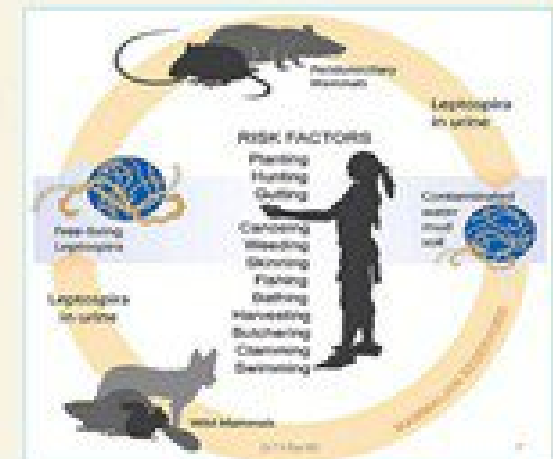
Risk Groups

Occupational exposure

Farmers – Rice, Sugarcane, Vegetables, Cattle, Pigs
Sewerage workers; Abattoirs, Butchers
Veterinarians, Lab staff, Miners, Soldiers
Fishermen – Inland (not on the sea)

Recreational activities

Swimming, Sailing, Marathon runners, Gardening



Diagnosis

Laboratory diagnosis

Samples:

- ▶ Urine, Kidney and liver from recently dead animal, blood and serum

Laboratory procedures

- ▶ Demonstration of organism by dark field microscope
- ▶ Urine analysis, proteinuria, hyperbilirinuria
- ▶ Hematological examination, leukopenia then leukocytosis and thrombocytopenia
- ▶ Serological test as agglutination test or ELISA
- ▶ Culture is difficult because of the organism is fastidious and slow growth

